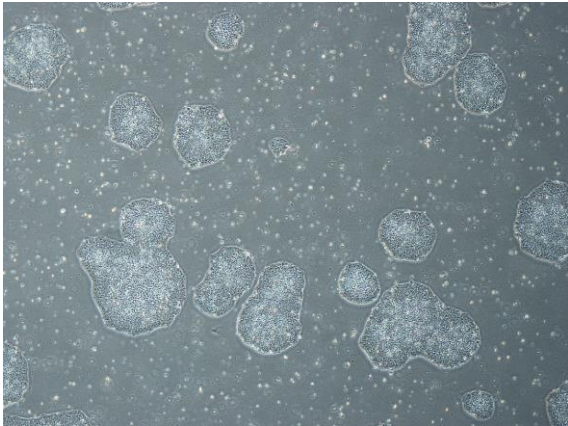
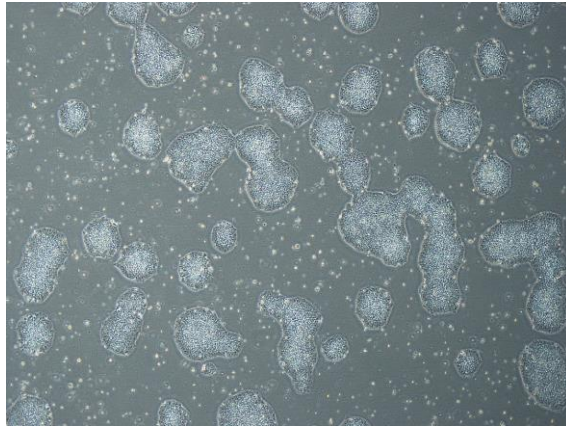


【 CiRA-j-1318 】 Morphology of iPSC colonies

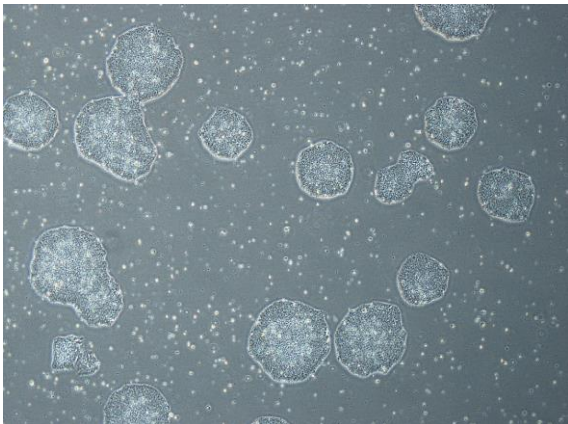
CiRA-j-1318-A: passage-3



CiRA-j-1318-B: passage-3



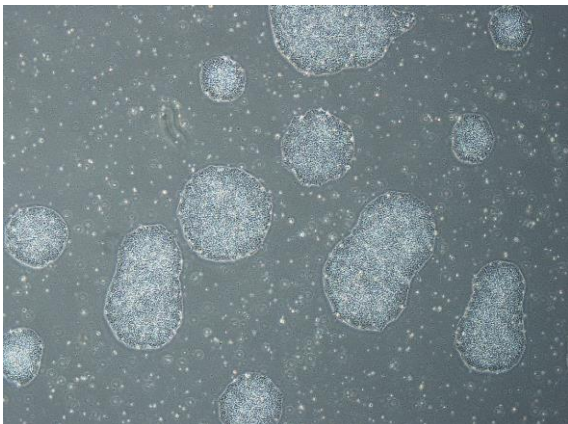
CiRA-j-1318-C: passage-3



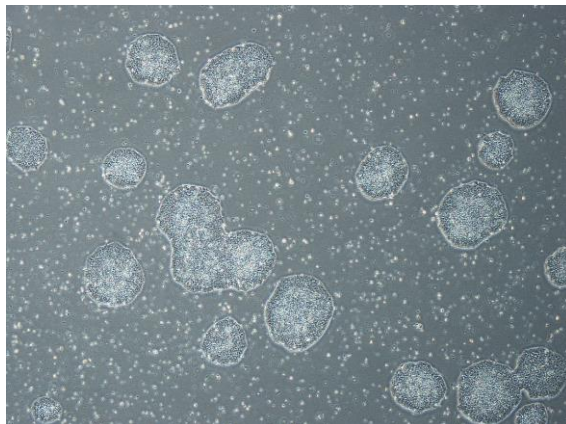
CiRA-j-1318-D: passage-3



CiRA-j-1318-E: passage-3



CiRA-j-1318-F: passage-3



(All images were captured at 4x magnification)